

DI-2001.39

**MINISTERIO DE DESARROLLO ECONOMICO  
ARTESANIAS DE COLOMBIA S.A**

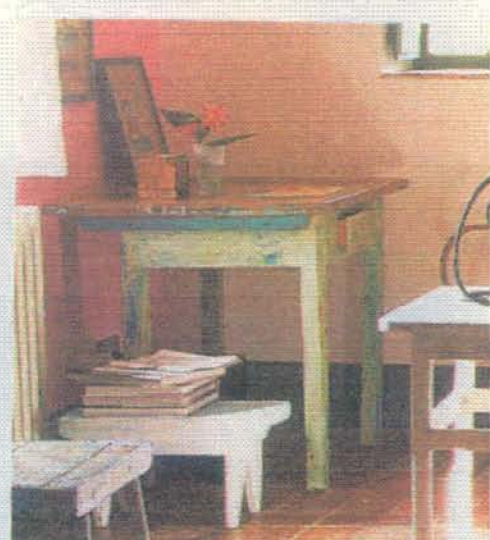
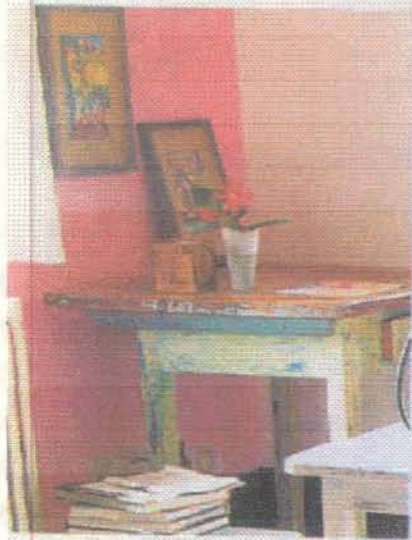
**CENTRO DE DISEÑO PARA LA ARTESANIA Y LAS PYME-Unidad de Bogotá  
LABORATORIO COLOMBIANO DE DISEÑO PARA LA ARTESANIA Y LA  
PEQUEÑA EMPRESA- Unidad de Pasto**

**TENDENCIAS DE DISEÑO  
COLECCIÓN TIERRA  
MUNICIPIO DE SANDONA- NARIÑO**

**Asesora: Marcela Echavarrían Saldarriaga**

**Agosto del 2002**

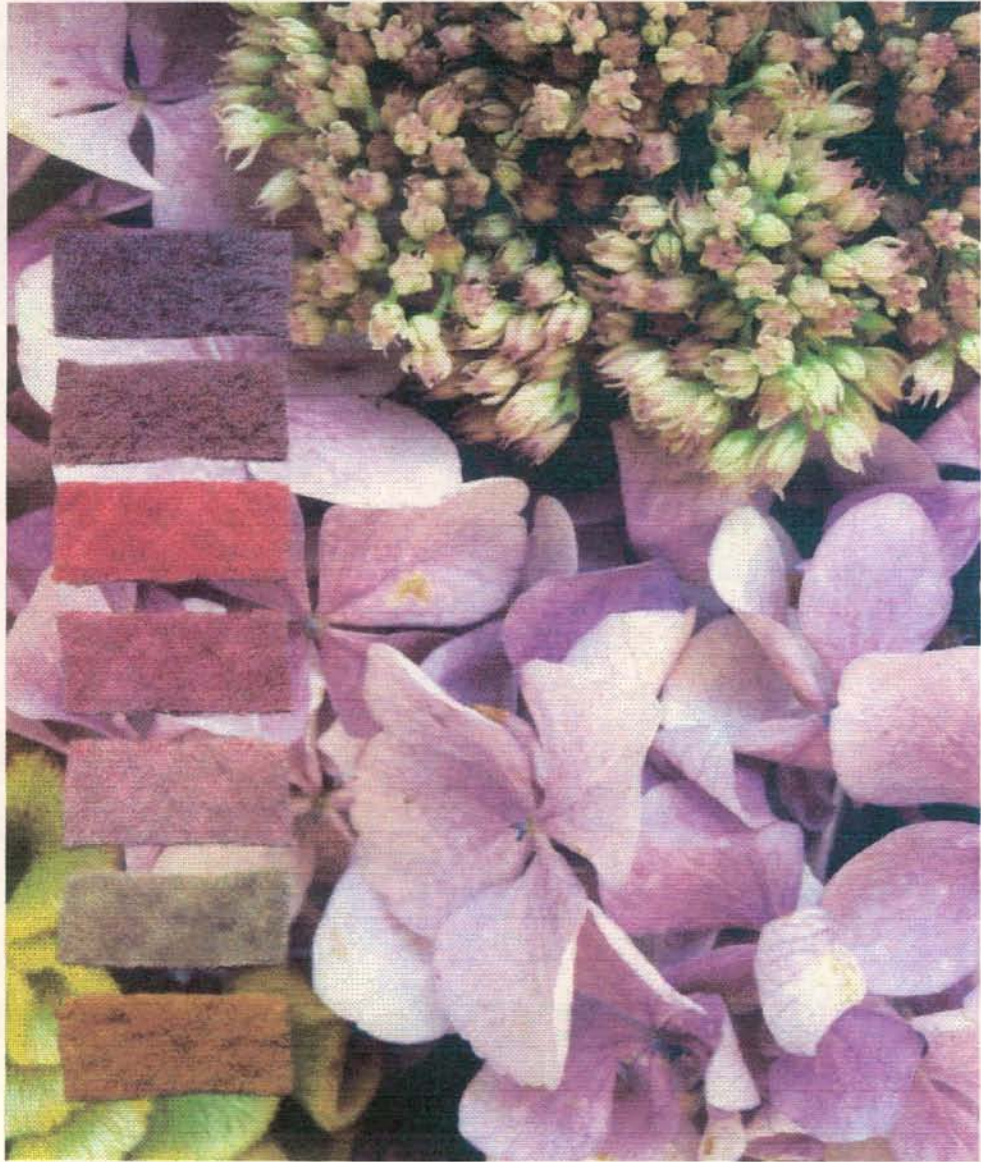




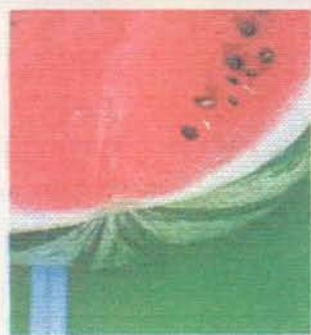
The subtle use of cooling contrasts, such as lime-green and pale blue, is the key to success in this ambitious pink, red, and purple color palette. Without the lime doorway, embroidered curtains, and even the sprigs of alchemilla and other leaves, the impact of all these closely related colors could be cloying. And yet it works—the pale pinks and powder-blues of the larger room continuing through to the smaller room, with its



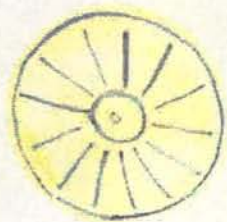
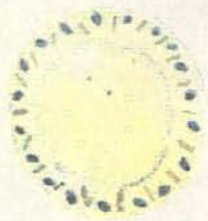
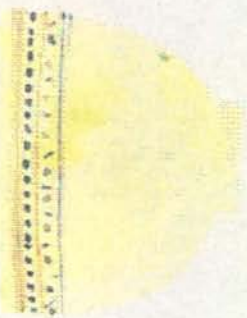
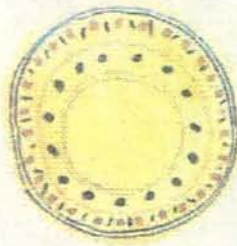
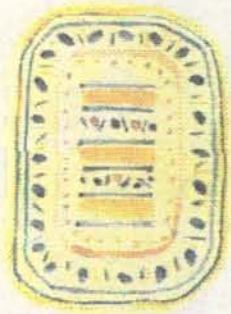
















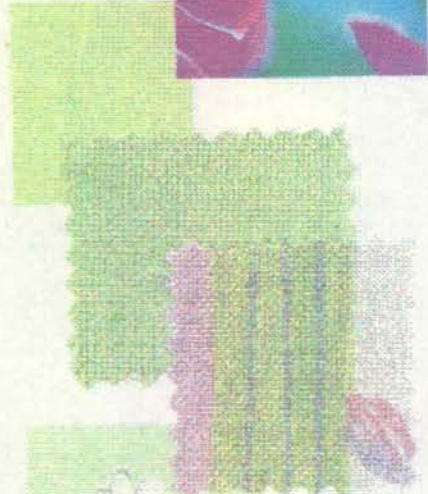
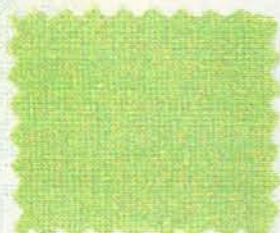
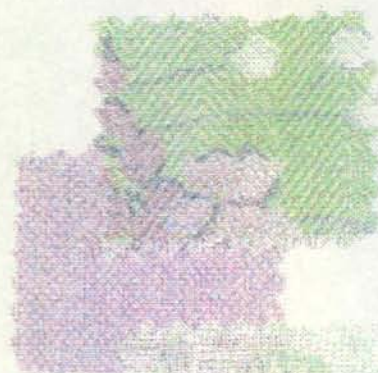
pages 176-78



pages 162-66



pages 188-89







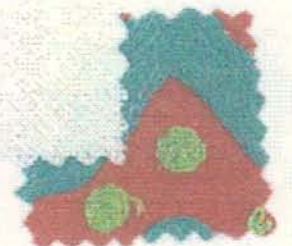
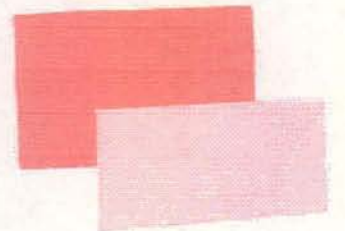
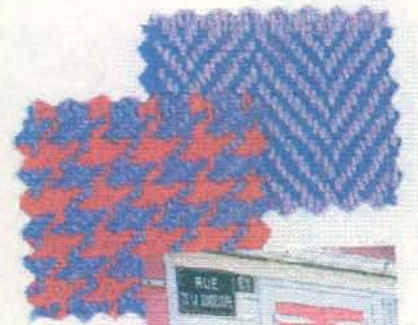
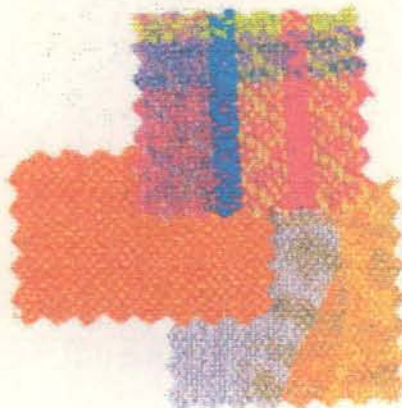
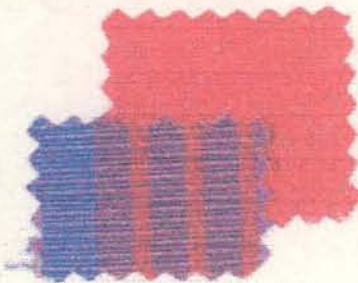
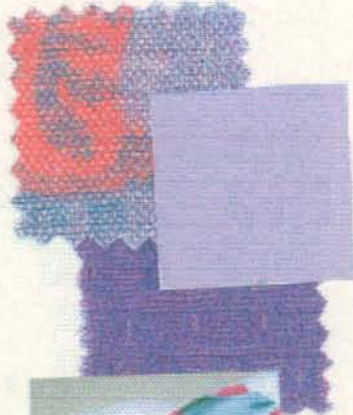
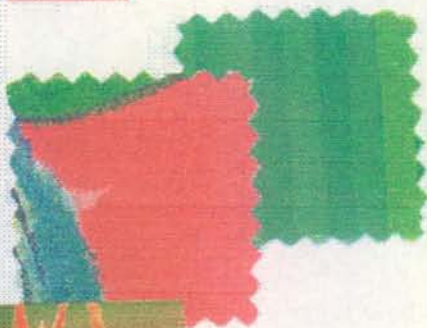
pages 98-100



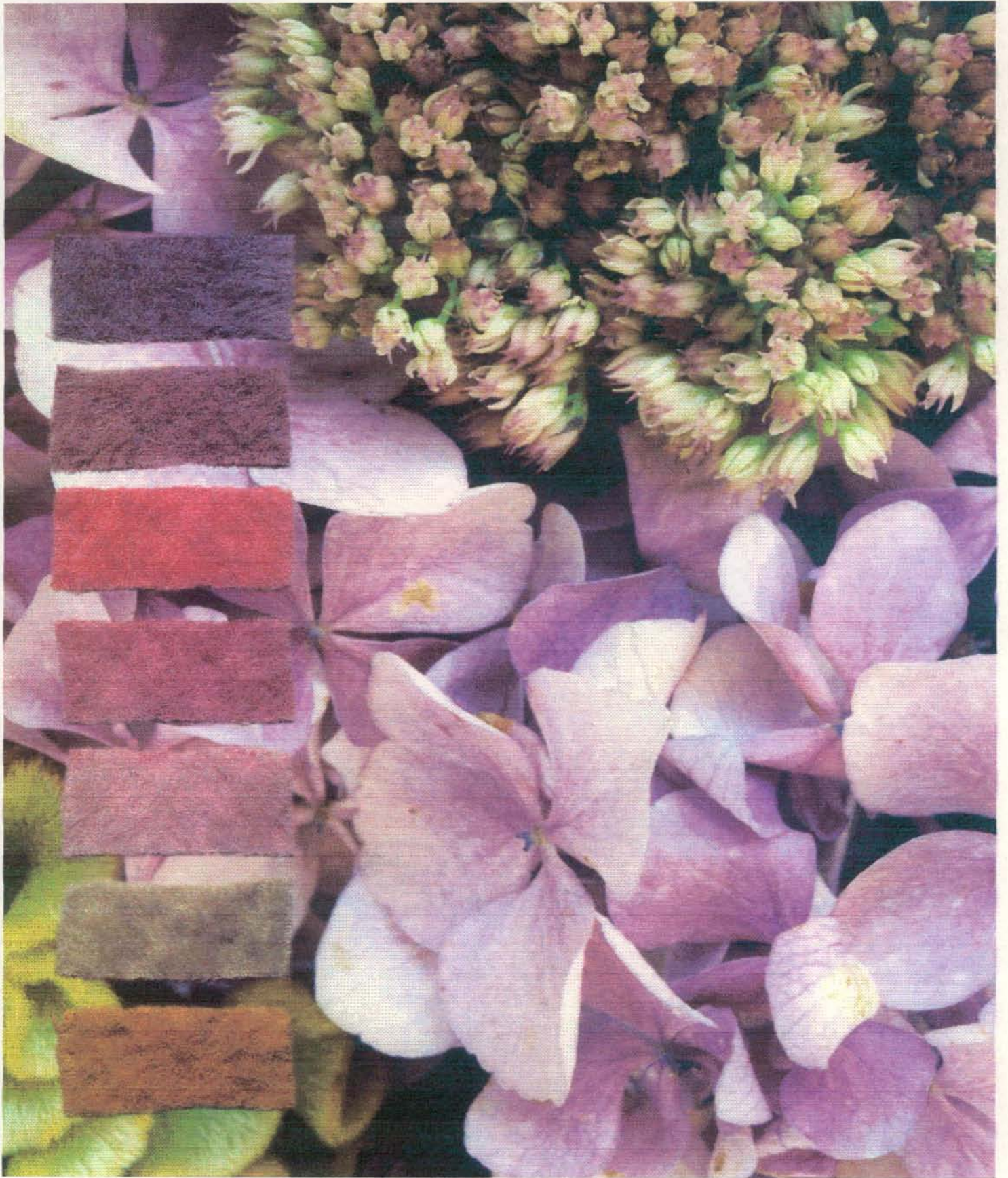
pages 102-3



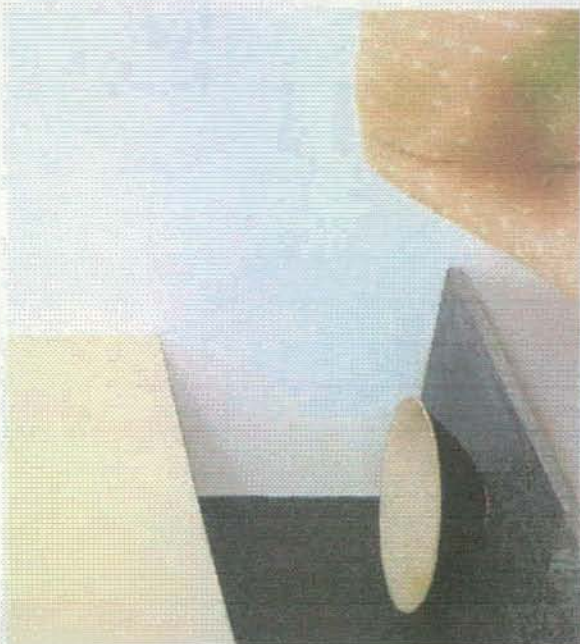
pages 108-10



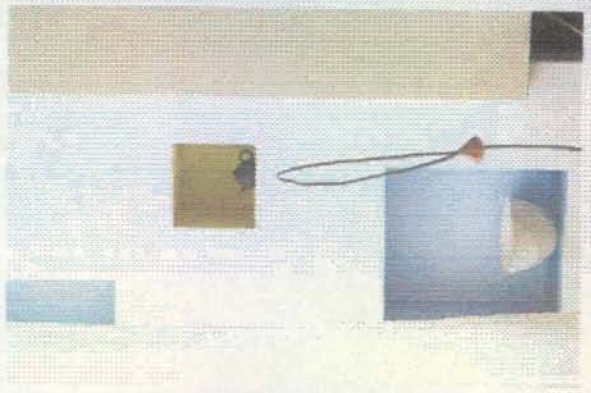
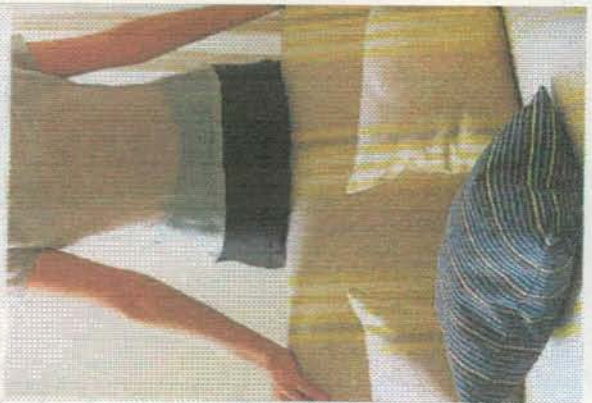












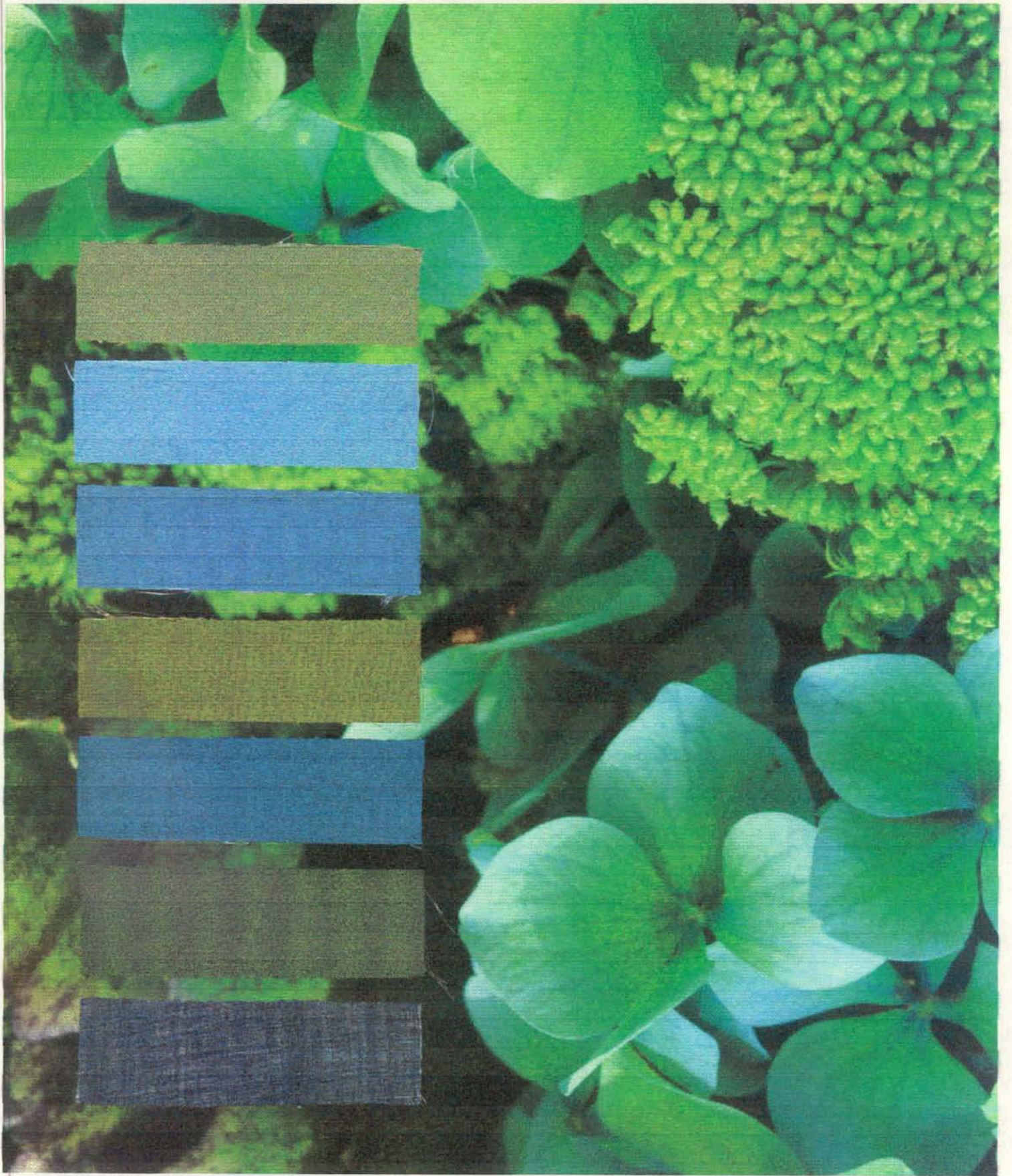




rd backdrop of strong, shocking-pink on one wall. There are bold juxtapositions of color in both rooms—a broad crimson stripe on the  
in orange sofa, red cushions on mauve chairs, and, in the large room, a mixture of pinks, strong blues, and turquoise. Again, the grape  
ve a cooling influence beside the hotter, stranger hues, and even the warm terracotta floors read as neutral in this context.







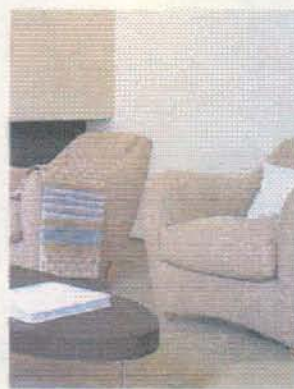




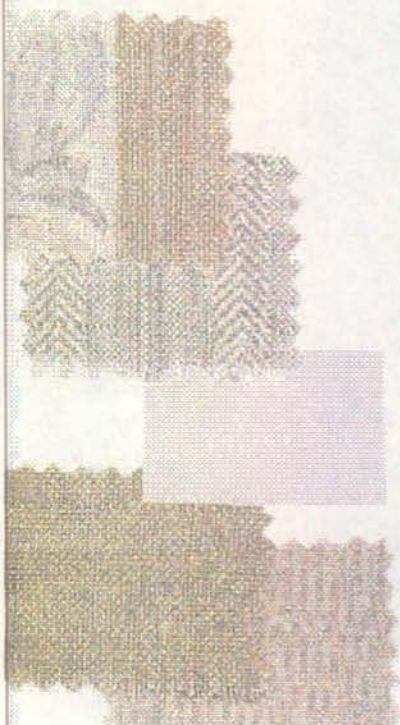
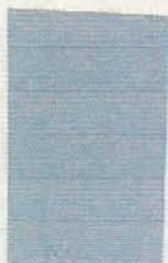
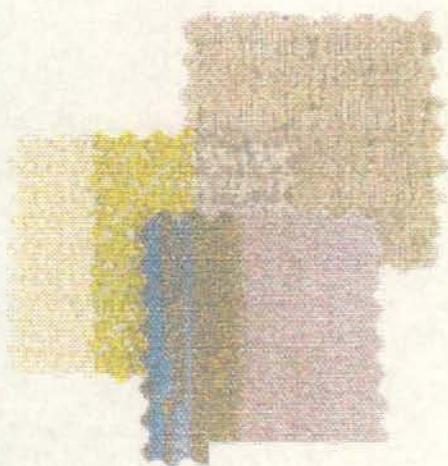
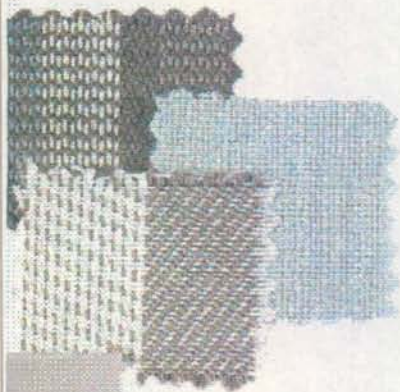
pages 76-80



pages 82-83



pages 84-85





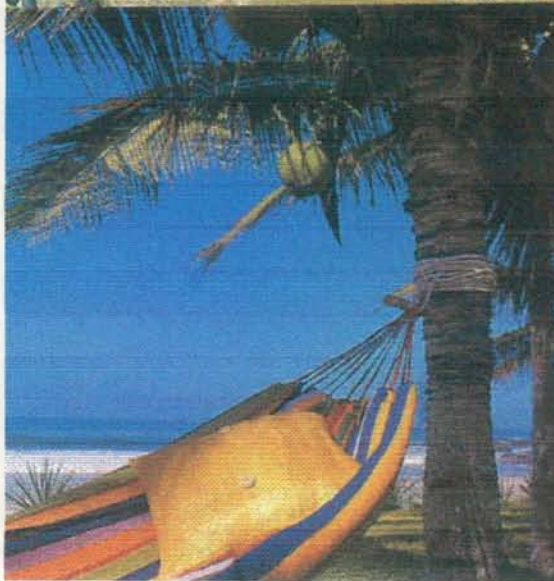
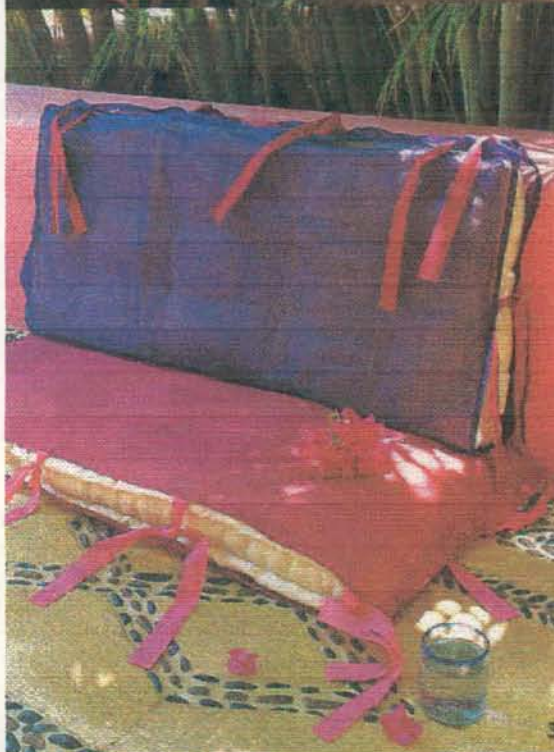
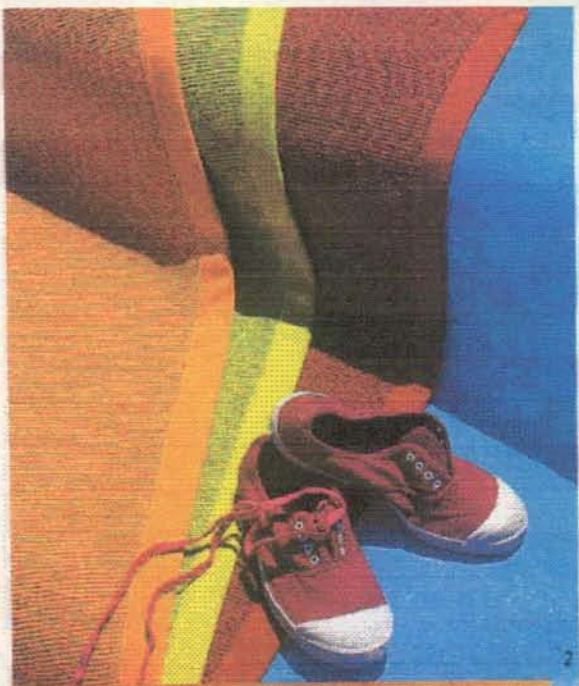
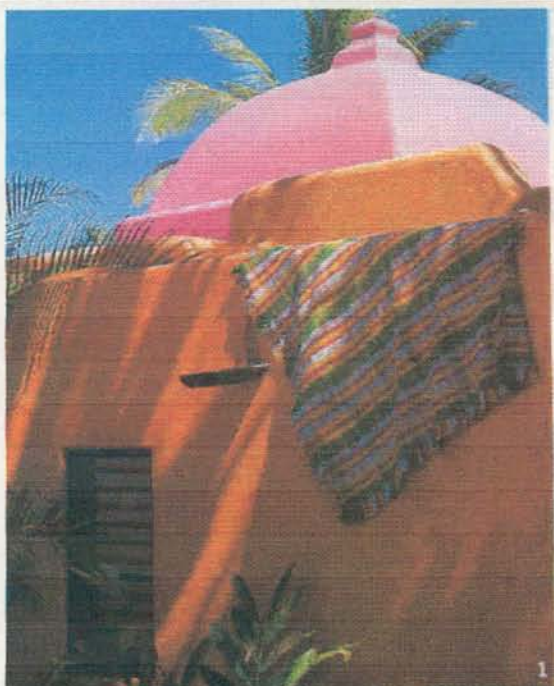






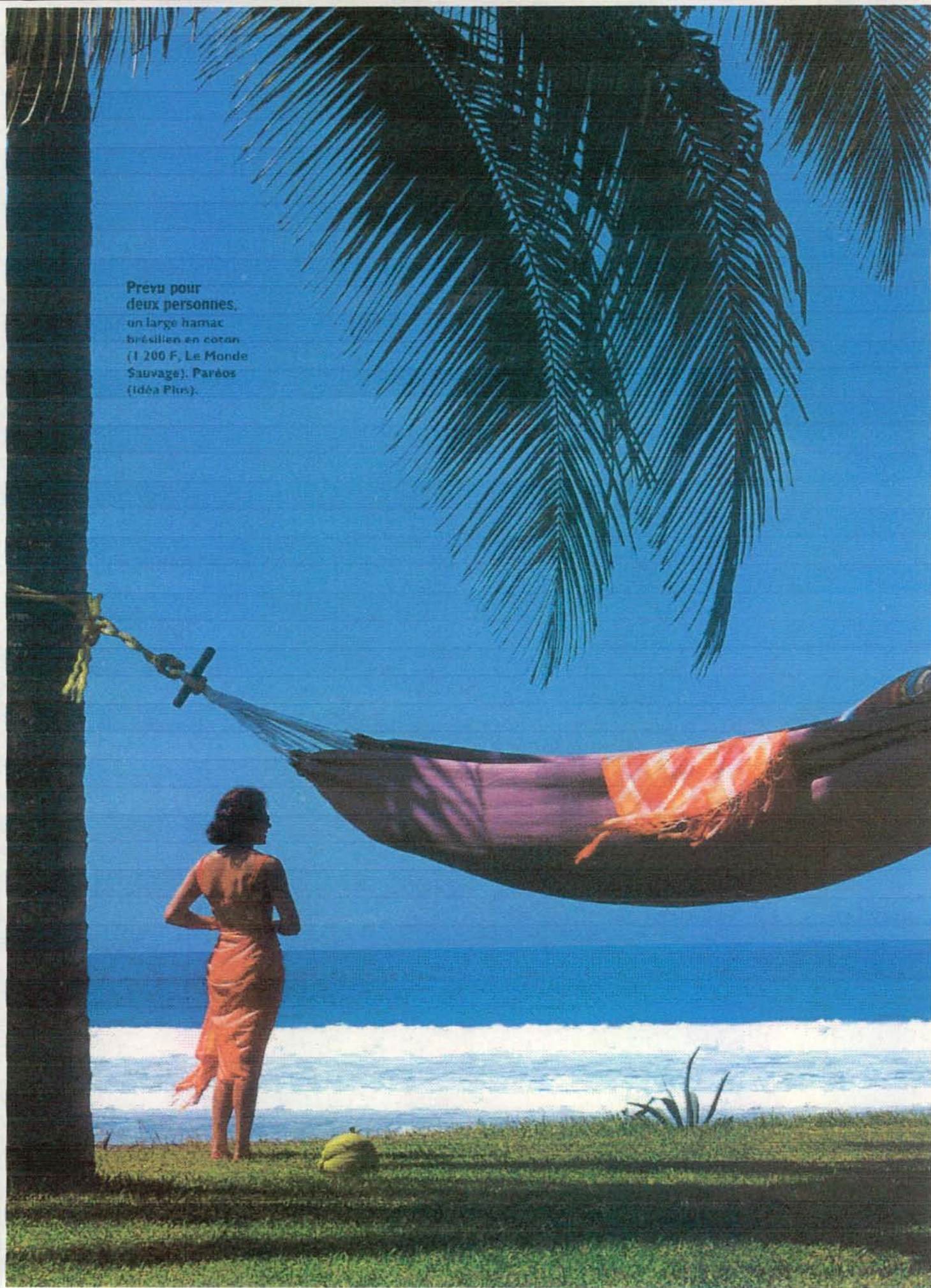
Bayadère. Des coussins de deux tailles différentes sont coupés dans une toile « Tiquetonne » 100 % coton, créée par Robert le Héros (420 F le mètre en 180 cm de large, le grand coussin, 580 F, le moyen, 380 F à la Galerie Sentou). « Naples », le voile de coton de 3 couleurs, existe



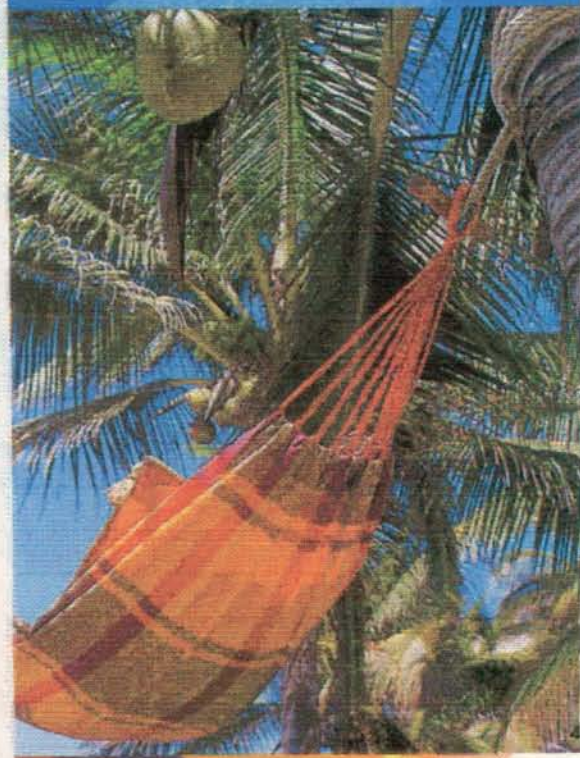
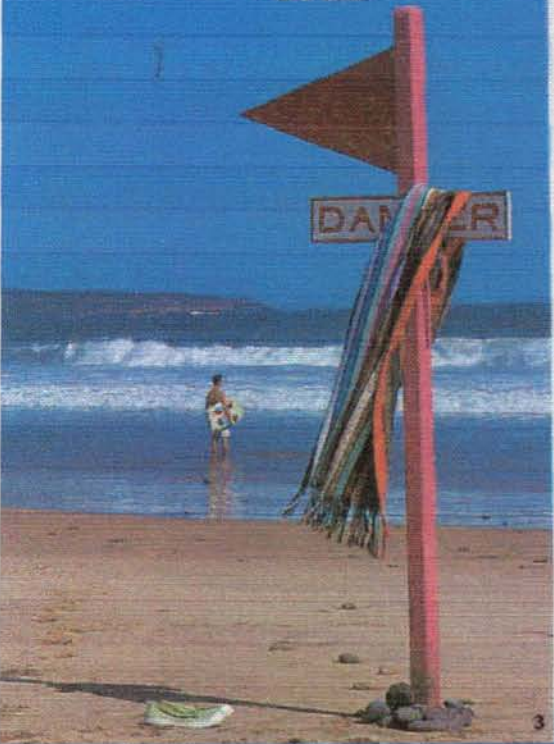
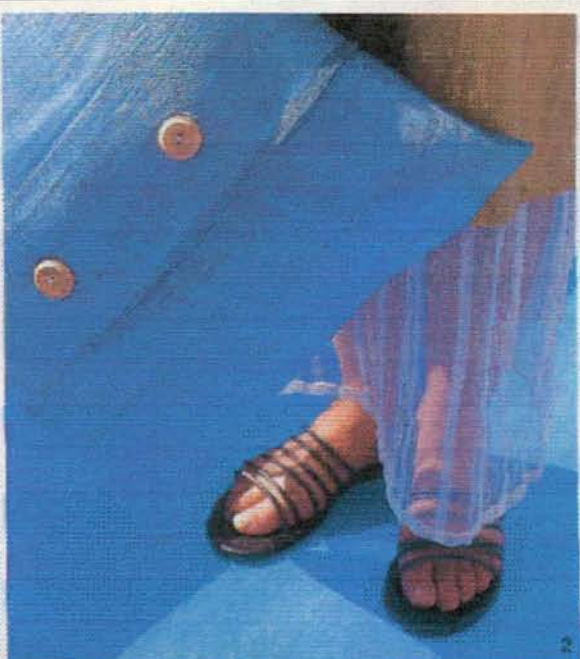




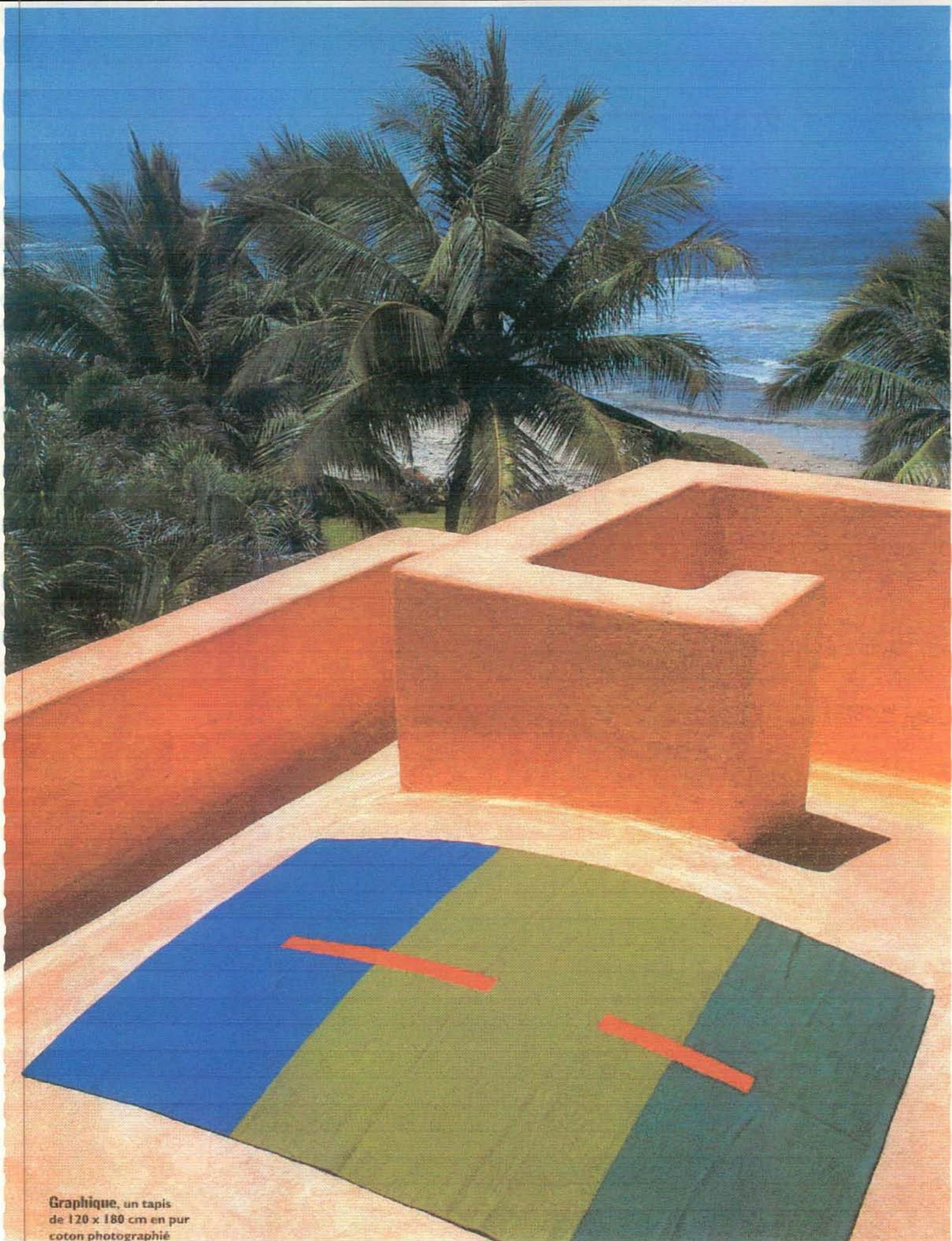
Prévu pour  
deux personnes,  
un large hamac  
brésilien en coton  
(1 200 F, Le Monde  
Sauvage). Paréos  
(Idée Plus).












**Graphique**, un tapis  
de 120 x 180 cm en pur  
coton photographié





Un rabane, un cabas  
carreaux fuchsia et vert  
nis (132 F) et des coussins  
frangés à bords tressés  
décorés de quatre pom-  
pons (132 F et 137 F, La  
boutique de Madagascar).

## L'été bariolé

Couleurs flamboyantes et rayures to  
azimuts pour des coussins, des tapis, des ham  
qui mettent la maison en vacanc



Trois voiles de couleur  
différente composent  
ces rideaux en organdi  
proposés en quatre  
harmonies. Ils mesurent  
300 x 110 cm (680 F,  
Le Monde Sauvage). Au  
sol, un tapis damier  
en tissu 100% coton, 140  
x 200 cm (1 530 F,  
Toulemonde Bochart).

Plein soleil sur l'organdi fluide et les tissages végétaux.





