

Ministerio de Desarrollo Económico  
**artesanías de colombia**

Laboratorio  
Colombiano *de* *diseño*  
*para la artesanía*  
*y la pequeña empresa*  
*Unidad Bogotá*

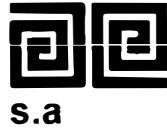
PRODUCCION Y COMERCIALIZACION DE PRODUCTOS  
ARTESANALES DE LA CAÑA FLECHA EN EL RESGUARDO  
INDIGENA ZENU DE SAN ANDRES DE SOTAVENTO  
(CORDOBA Y SUCRE)

ANEXO

PUNTADAS TRADICIONALES DE CAÑA FLECHA

GUILLERMO VIVEROS ASTUDILLO

SANTA FE DE BOGOTÁ D.C., 2000



Ministerio de Desarrollo Económico

**artesanías de colombia**

**s.a**

SUBGERENCIA DE DESARROLLO  
OFICINA DE DISEÑO

CECILIA DUQUE DUQUE  
GERENTE GENERAL

JAIRO CARRILLO REINA  
SUBGERENTE DE DESARROLLO

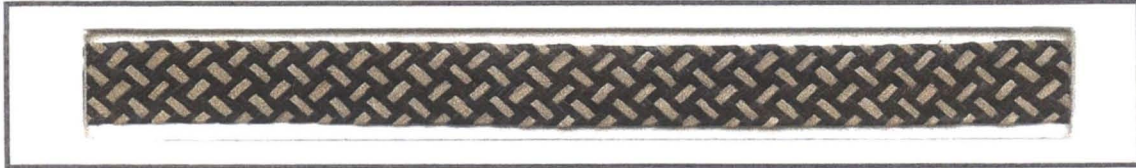
ASER VEGA CAMARGO, MA. GABRIELA CORRADINE MORA,  
COORDINADORES REGIONALES

GUILLERMO VIVEROS ASTUDILO

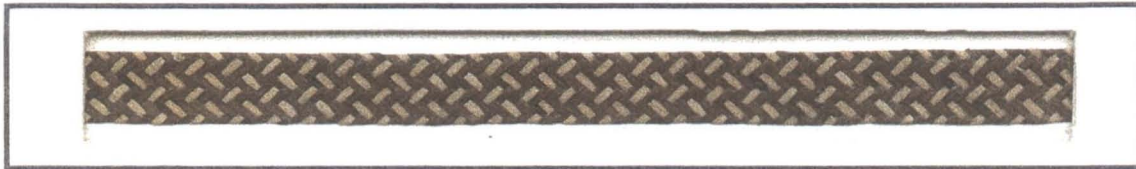
GRUPOS DE ARTESANOS DE LA COMUNIDAD INDÍGENA ZENÚ DE  
SAN ANDRÉS DE SOTAVENTO (CÓRDOBA Y SUCRE)



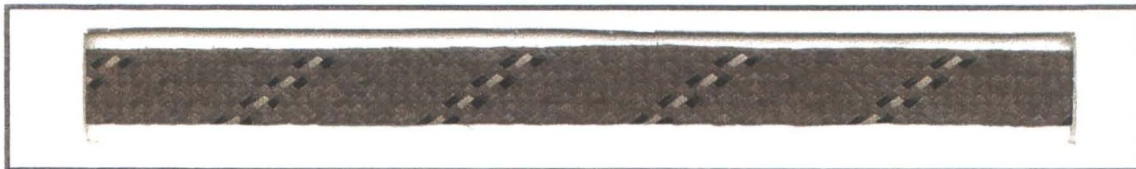
RESGUARDO INDIGENA ZENU DE SANDRES DE SOTAVENTO - CAÑA FLECHA



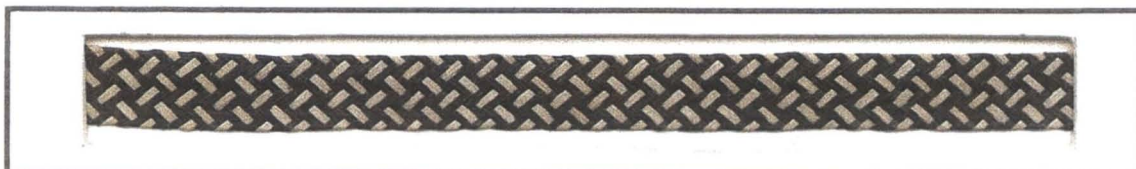
15 Pares



15 Pares

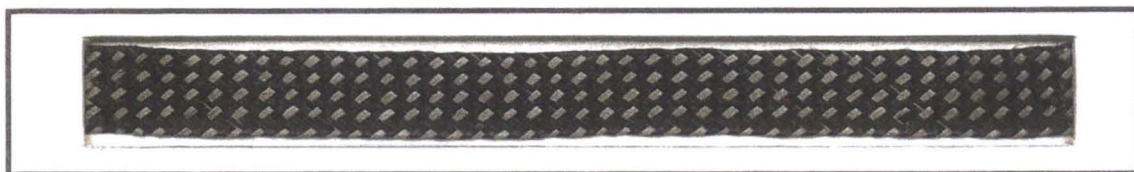


15 Pares

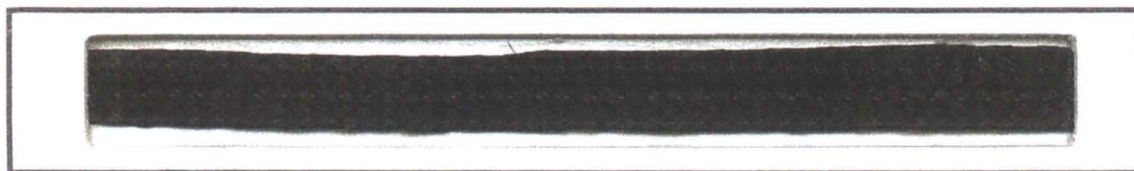


15 Pares

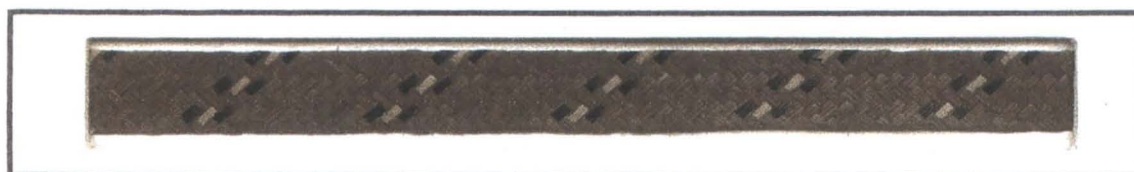
RESGUARDO INDIGENA ZENU DE SANDRES DE SOTAVENTO - CAÑA FLECHA



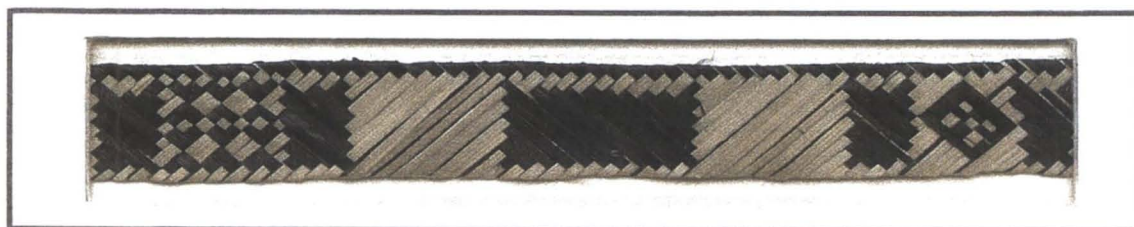
10 Pares



11 Pares

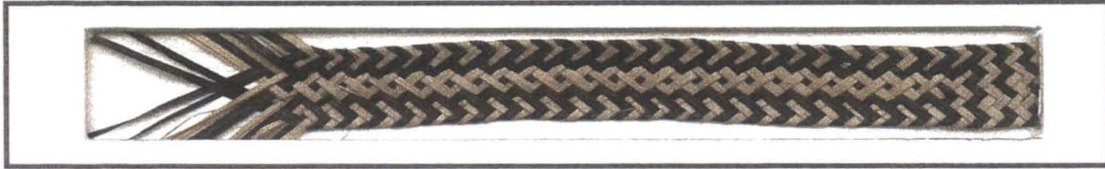


11 Pares



15 Pares

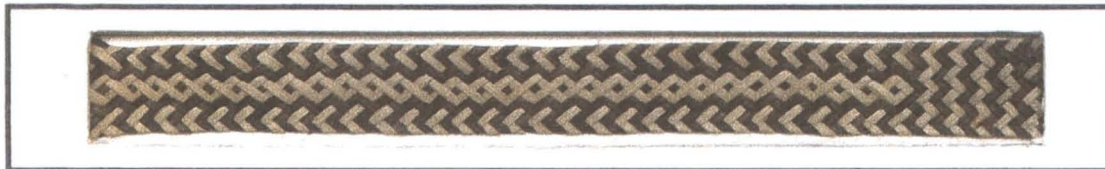
RESGUARDO INDIGENA ZENU DE SANDRES DE SOTAVENTO - CAÑA FLECHA



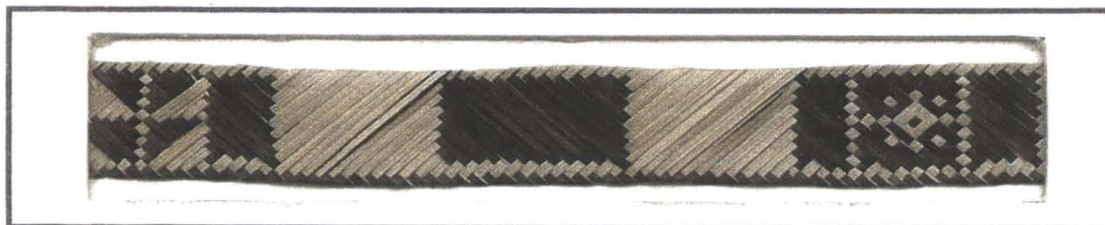
16 Pares



16 Pares



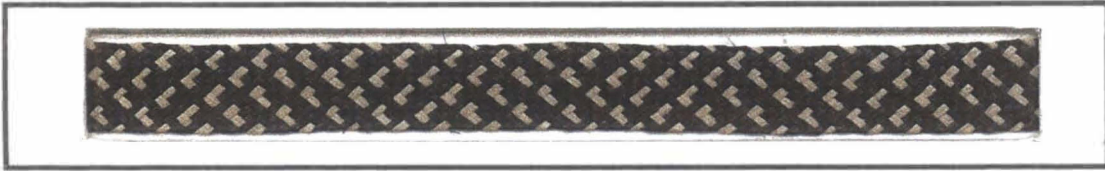
16 Pares



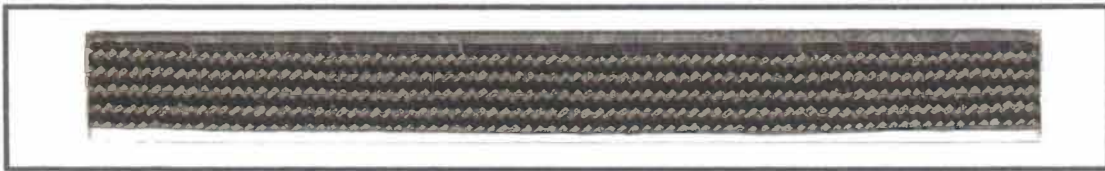
19 Pares



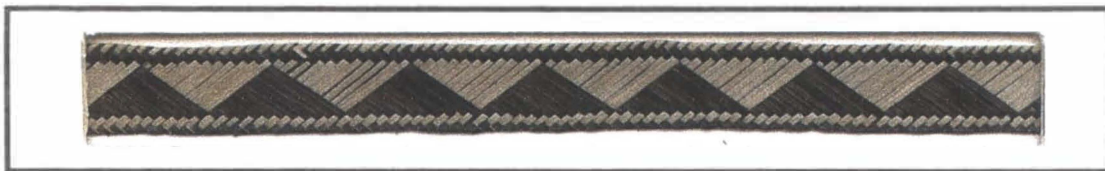
RESGUARDO INDIGENA ZENU DE SANDRES DE SOTAVENTO - CAÑA FLECHA



19 Pares



19 Pares



19 Pares

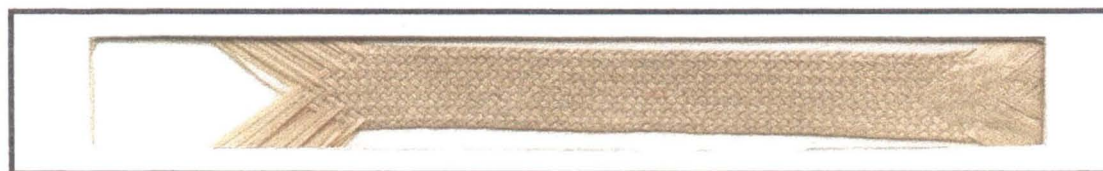


19 Pares

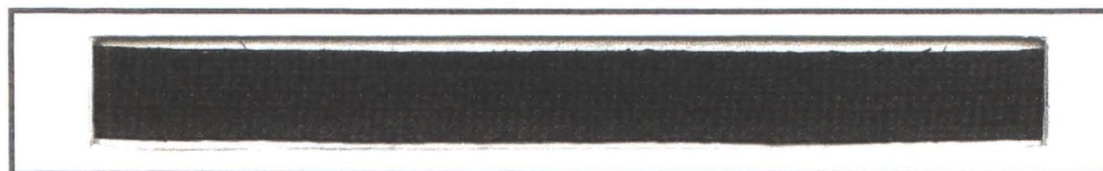
RESGUARDO INDIGENA ZENU DE SANDRES DE SOTAVENTO - CAÑA FLECHA



21 Pares



23 Pares



23 Pares



23 Pares



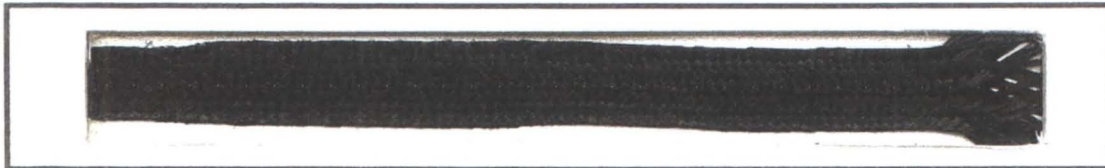
RESGUARDO INDIGENA ZENU DE SANDRES DE SOTAVENTO - CAÑA FLECHA



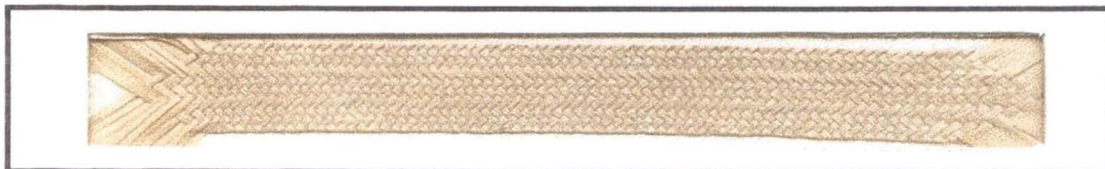
19 Pares



20 Pares



21 Pares



21 Pares



RESGUARDO INDIGENA ZENU DE SANDRES DE SOTAVENTO - CAÑA FLECHA



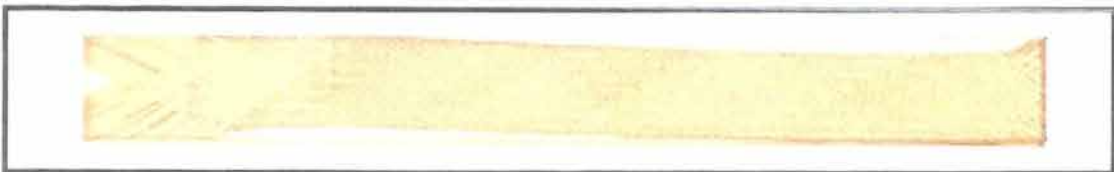
25 Pares



27 Pares



27 Pares



27 Pares